

SUSE Manager 3 Setup

Adfinis**sy**Group

Be smart. Think open source.

SUSE Manager 3 - Setup



Agenda

- Functions
- Components
- Architecture
- Requirements
- Installation
- SCC / SMT
- Synchronisation

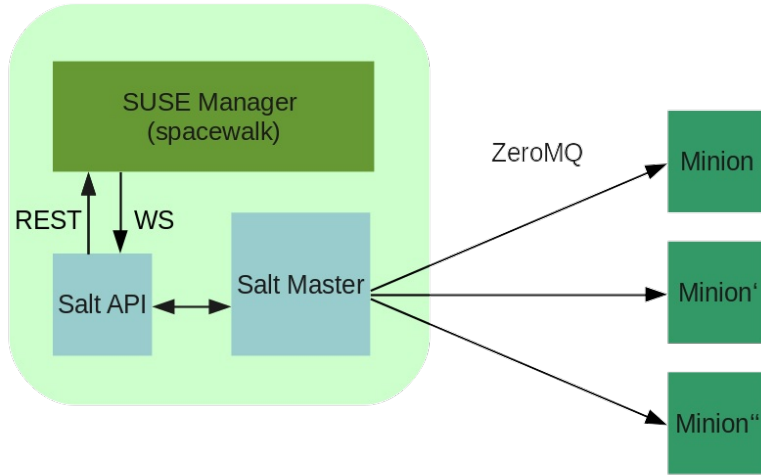
Functions

- Provisioning
- Packages Management
- Patch Management
- Configuration Management

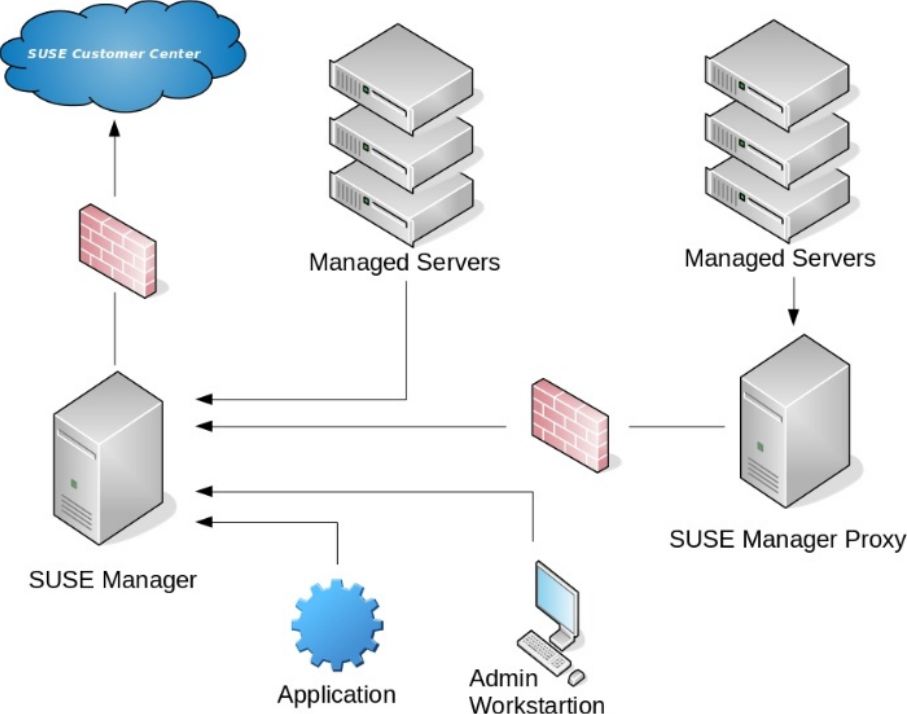
Components

- Spacewalk / API
- Cobbler
- Postgres DB
- Apache Webserver
- Proxy
- SaltStack / API

SaltStack



Architecture



Requirements

- Subscriptions
- Internet Access / SMT
- OS Version
- Hardware
- File system
- DNS / NTP
- Firewall rules

Supported Clients

- Salt
 - SLES11 SP3 =<
- Traditional
 - SLES10 SP3 =<
 - RHEL5 =<
 - Novel Open Server 11 =<

Registration

scc.suse.com

```
# SUSEConnect -e "$mail_address" -r "$registration_code"
```

```
# SUSEConnect -p SUSE-Manager-Server/3.0/x86_64 -r "$registration_code"
```

If your SUMA system doesn't have access to SCC, use your internal SMT server.

Installation

Available as pattern

```
# zypper install -t pattern suma_server
```

Yast Wizar

- E-mail address for notifications
- Cert setup
- Database credentials
- SCC settings

```
# yast2 susemanager_setup
```

Create Organization

- Define Organization Name
- Create User

Hands-on :: Setup 01

Feel Free to Contact Us

www.adfinis-sygroup.ch

[Tech Blog](#)

[GitHub](#)

info@adfinis-sygroup.ch

[Twitter](#)

