

SUSE Manager 3 Proxy

Adfinis**sy**Group

Be smart. Think open source.

SUSE Manager 3 - Proxy



Agenda

- Overview
- Components
- Architecture
- Requirements
- Installation
- Configuration
- Register clients with the proxy

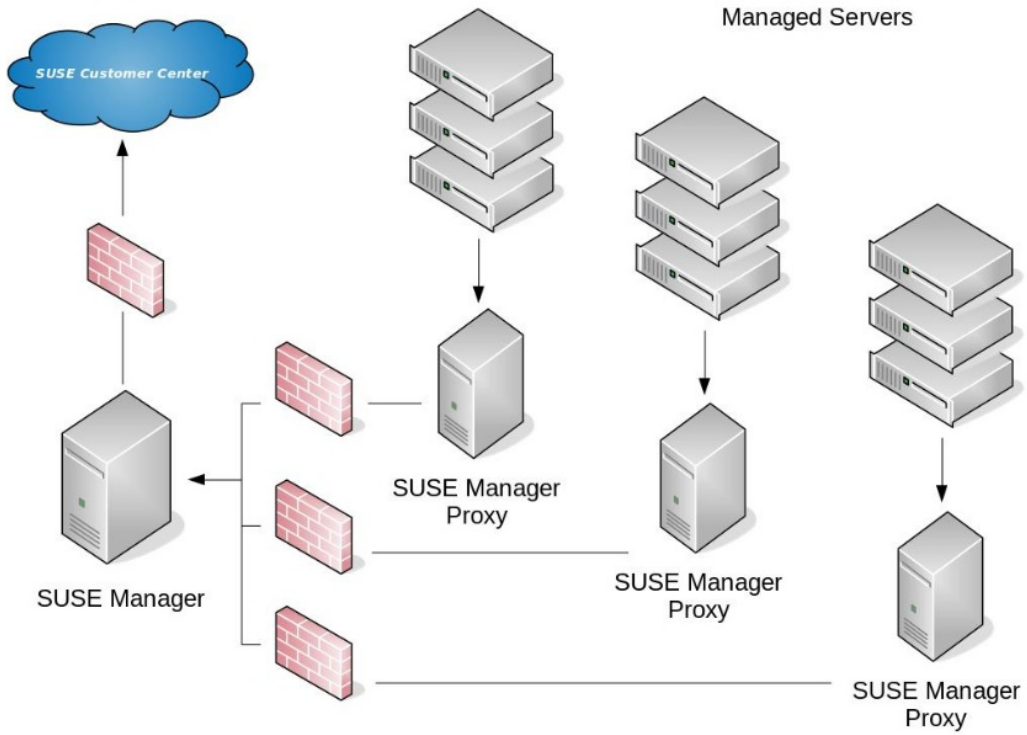
Overview

- SUSE Manager add-on
- Available as pattern
- The client registers with the Proxy
- The Proxy is registered as a client with the SUMA

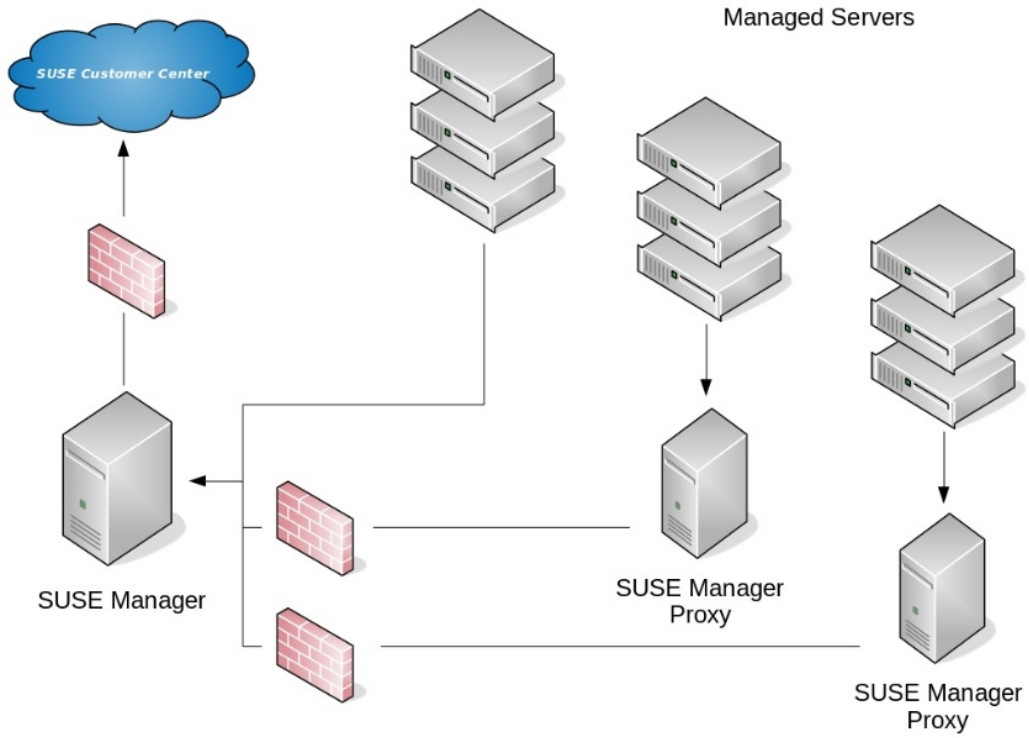
Components

- Apache Web Server
- Squid Proxy Server
- SaltStack Brocker
- Brocker for Tranditional Clients

Architecture I



Archidecture II



Requirements

- Hardware
- SLES12 SP1
- File System for `/var/cache/squid`
- Firewall Rules

Installation

- Activation key with SUMA Proxy child channels
- Register the proxy
- Install the pattern

Configuration

- Run `configure-proxy.sh`
- Copy the CA certs
- TFTP and Cobbler sync

Register Clients

- Traditional Client
- Salt Minion

Hands-on :: Proxy 05

Feel Free to Contact Us

www.adfinis-sygroup.ch

[Tech Blog](#)

[GitHub](#)

info@adfinis-sygroup.ch

[Twitter](#)

